



A PARENT/ CARER'S GUIDE TO

# SEND

IN GAINSBOROUGH AND DISTRICT SCHOOLS

*Inclusion, Celebration and Support*







## GAINSBOROUGH ASPIRATION PROJECT

# SEND CHARTER

### In Gainsborough and district schools:

- There is a culture of inclusion – we celebrate and embrace SEND differences
- SEND is everyone’s responsibility; every teacher is a teacher of SEND
- Our SENDCOs work in partnership to ensure a consistent approach to SEND across the district
- We recognise that behaviour is the communication of an unmet need
- We keep the families of children and young people with SEND at the heart of everything we do - working with them to further their child’s education and ensuring their voices are heard
- We work with our families, partner organisations and agencies, including the voluntary sector, across our community to help our children and young people achieve their potential
- We support our children and young people to prepare for the choices, opportunities and responsibilities of adulthood

### The following schools have signed up to the SEND Charter:

- Aegir Specialist Academy
- Benjamin Adlard Primary School
- Blyton cum Loughton CE Primary School
- Castle Wood Academy
- Charles Baines Primary School
- Corringham CE Primary School
- Frances Olive Anderson Primary School -Lea
- Gainsborough Nursery School
- Handel House Preparatory School
- Hemswell Cliff Primary School
- Hillcrest Infant Academy
- Mercer’s Wood Academy
- Morton Trentside Primary School
- Parish Church CE Primary School
- Queen Elizabeth’s High School
- Scotter Primary School
- St George’s CE Primary School
- The Gainsborough Academy
- Waddingham Primary School
- Warren Wood Specialist Academy
- Whites Wood Academy
- Willoughton Primary School

## Why don't you visit your child's school website where you can find lots of useful information such as:



How you can support your child's education.



The school's SEND policy.



The name and contact details of the school's SEND Governor.



Where parents/ carers of children with SEND can find support in the community.



The name and contact details of the school's special needs co-ordinator (SENDCo).



The school's SEND offer.

## SEND MYTH BUSTERS

The Myth	The Truth
The school will not give my child an Education and Health Care Plan (EHCP).	School completes the paperwork for an EHCP request; this can take up to a year. However, Lincolnshire County Council make the final decision.
The school decide how much funding my child gets.	SEND children do not get individual funding unless they have an EHCP. Lincolnshire County Council decide how much this is. On occasions, school may challenge the amount of funding.
School decides which children have 1:1 adult support.	If an application is put in for an EHCP, the Local Authority decide if they will agree to assess the child. They also decide if funding should be allocated to the child and whether the child needs adult support. Schools do not write EHCPs or allocate EHCP funding.
If I am asked to do a parenting course, it means I am a bad parent.	Not at all! We all know parenting is hard work. Parents who have completed the course always come back with positive feedback, for example, 'I realised it was about changing my behaviour rather than trying to change my child's behaviour.'
My child has a diagnosis; therefore, they must be on the SEND register	Any child with a diagnosis is put onto our SEND list to be monitored until they transition to their next setting. If they require support that is "additional to and different from" their peers, then they will be placed on the SEND register.
I have to see the SENDCo regarding my child's SEND.	Your child's class teacher is always the first person to speak to regarding a SEND concern —they know your child best! After that, you are welcome to book an appointment to see the SENDCo for further support.

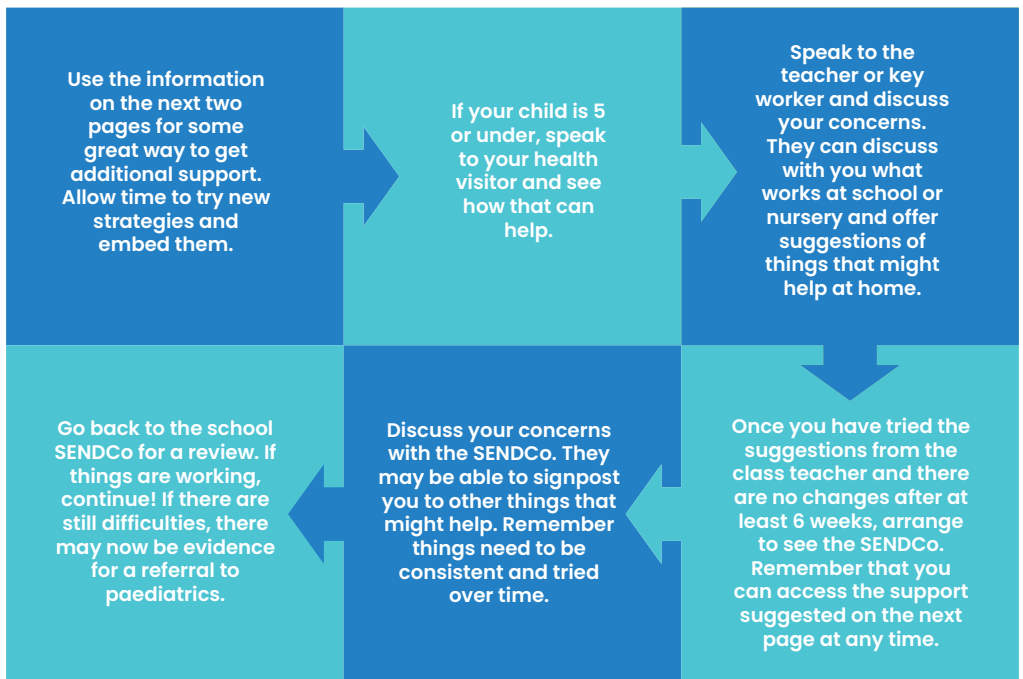


$2 \times 4 = 8$   
 $3 \times 3 = 9$   
 $4 \times 2 = 8$   
 $5 \times 1 = 5$   
 $6 \times 0 = 0$

## Paediatrics referral pathway:

If your child does not display behaviours in school, school are not able to refer on the paediatrics pathway as they will not meet the NHS' strict criteria for neurodevelopmental assessment.

Before a referral can be completed, you should follow the steps below to gather evidence that different strategies have been tried and tested. Referrals will not be accepted unless strategies have been tried over time.



It can take up to 2+ months of work for behaviour changes to become embedded. It is vital that you are consistent and stick with it, even when things get tricky and your child is pushing back.

# Seeking Support

The following two pages contain useful information to help support you and your child:

## In Our Place

You can access some great online learning (understanding your child's feelings, understanding your child's additional needs, understanding your child's mental health and wellbeing needs) through In Our Place:

[www.inourplace.heiapply.com/online-learning/courses](http://www.inourplace.heiapply.com/online-learning/courses)

All you will need to do is put in the password WE\_CAN and enter your Lincolnshire postcode to access a wealth of support.

## Lincolnshire Local Offer

The Lincolnshire Local Offer brings together information for children and young people with special educational needs and disabilities and their families.

[www.lincolnshire.gov.uk/send-local-offer](http://www.lincolnshire.gov.uk/send-local-offer)

## ESCO

ESCO (Early Support Co-ordination) offer virtual drop-in appointments via the telephone where you can discuss support and services available.

Call 01522 782111 and ask for a drop-in session with an ESCO key worker.

## PAACT

Parents and Autistic Children together are a friendly and informal group based in Gainsborough and Lincoln.

[www.paactsupport.com](http://www.paactsupport.com)

## Virtual Autism Hub

The hub works directly with the parents/ carers of autistic people of all ages to help them access service and other local support.

[www.lpft.nhs.uk/our-services/virtual-autism-hub](http://www.lpft.nhs.uk/our-services/virtual-autism-hub)

## Family Hubs

[www.lincolnshire.gov.uk/directory-record/62596/gainsborough-market-arcadechildren-s-centre-part-of-the-family-hubsprogramme](http://www.lincolnshire.gov.uk/directory-record/62596/gainsborough-market-arcadechildren-s-centre-part-of-the-family-hubsprogramme)

## LIAISE

Liaise is Lincolnshire's Special Educational Needs and Disability Information, Advice and Support Service (SENDIASS). They provide confidential and impartial information, advice and support to children and young people (0-25years) with SEN and disabilities, and their parents and carers.

[www.lincolnshire.gov.uk/liaise](http://www.lincolnshire.gov.uk/liaise)



## **Autism**

Autism East Midlands Hub – [www.autismeastmidlands.org.uk](http://www.autismeastmidlands.org.uk)  
[www.autism.org.uk/advice-and-guidance/topics/what-is-autism](http://www.autism.org.uk/advice-and-guidance/topics/what-is-autism)

## **Behaviour**

[www.family-action.org.uk/services/helping-hands-autism-adhd-behaviour-support](http://www.family-action.org.uk/services/helping-hands-autism-adhd-behaviour-support)  
[www.behavioursupporthub.org.uk](http://www.behavioursupporthub.org.uk)  
[www.123magic.com/parenting-tips](http://www.123magic.com/parenting-tips)  
[www.youngminds.org.uk/parent/parents-a-z-mental-health-guide/challenging-behaviour](http://www.youngminds.org.uk/parent/parents-a-z-mental-health-guide/challenging-behaviour)

## **Sleep**

[www.thesleepcharity.org.uk](http://www.thesleepcharity.org.uk)  
[creators.spotify.com/pod/show/lpft-nhs/episodes/MHST-Top-tips-on-getting-extra-Zzzz-et79fn](https://creators.spotify.com/pod/show/lpft-nhs/episodes/MHST-Top-tips-on-getting-extra-Zzzz-et79fn)  
[thesleepcharity.org.uk/information-support/ children/childrens-sleep-ebook](http://thesleepcharity.org.uk/information-support/children/childrens-sleep-ebook)

## **ADHD**

[www.adhduk.co.uk](http://www.adhduk.co.uk)  
[www.adhdfoundation.org.uk](http://www.adhdfoundation.org.uk)

## **Mental Health**

Here4You Line: 0800 234 6342  
[www.lpft.nhs.uk/young-people/lincolnshire/young-people/self-referral](http://www.lpft.nhs.uk/young-people/lincolnshire/young-people/self-referral)  
[www.parentingsmart.place2be.org.uk](http://www.parentingsmart.place2be.org.uk)

## **Lincolnshire Parent Carer Forum**

[www.lincspcf.org.uk](http://www.lincspcf.org.uk)



*Gainsborough Aspiration Project: December 2024*

